



GeneralTouch Controller

User Guide

For 4001S Controller



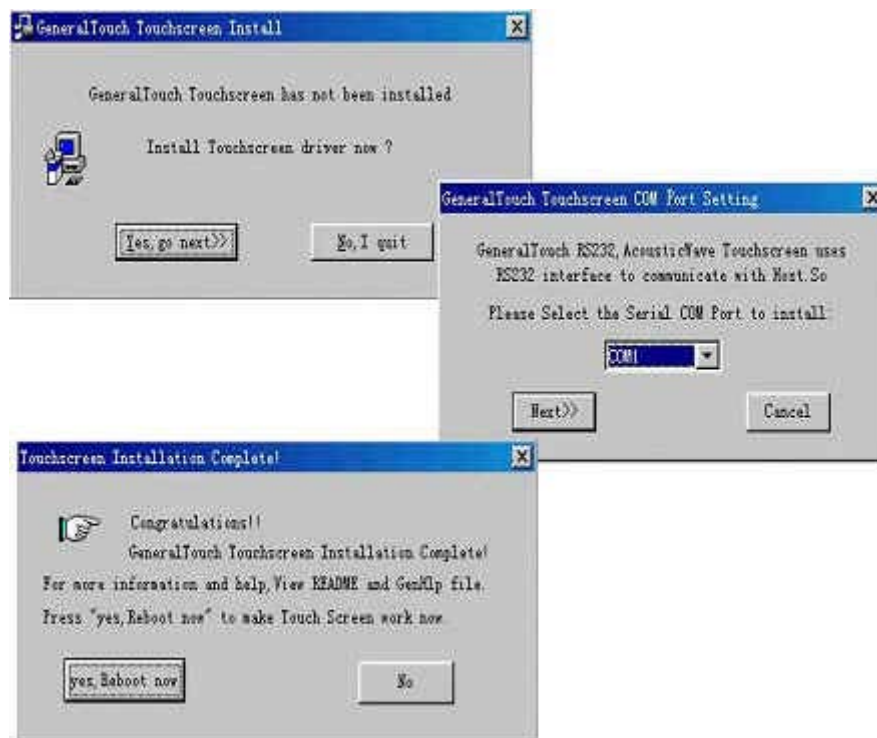
Generaltouch Touch Technology Co. ,Ltd.

Website: www.generaltouch.com

E-mail: general@generaltouch.com

Install the driver (for Windows9x, 2000)

Shut down all the application programs, insert the touchscreen driver disc into the floppy disc drive, run Geninst.exe in the floppy disc.



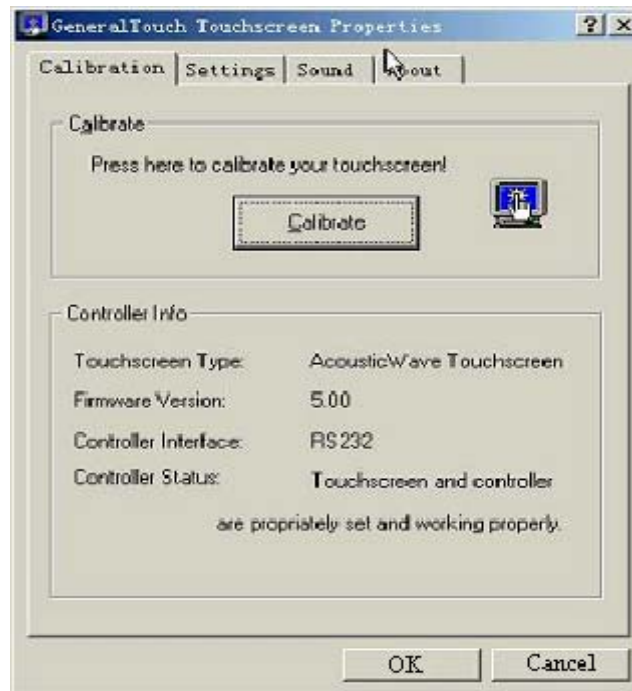
According to the above prompts, select the corresponding serial port, after restarting the computer, the touchscreen driver will be loaded.

Calibration of the touchscreen

After the touch driver is successfully installed, the finger-clicking position does not correspond to that of the mouse pointer, calibration should be applied to the touchscreen.

After installation of the driver , the computer system will automatically run the calibration program when the computer is restarted. Or after the drift occurs, run the calibration program according to the following steps:

Click “start”---“setup”--- “controller panel ” —“GeneralTouch touchscreen”,
Click “Calibrate” buttton in the following interface.



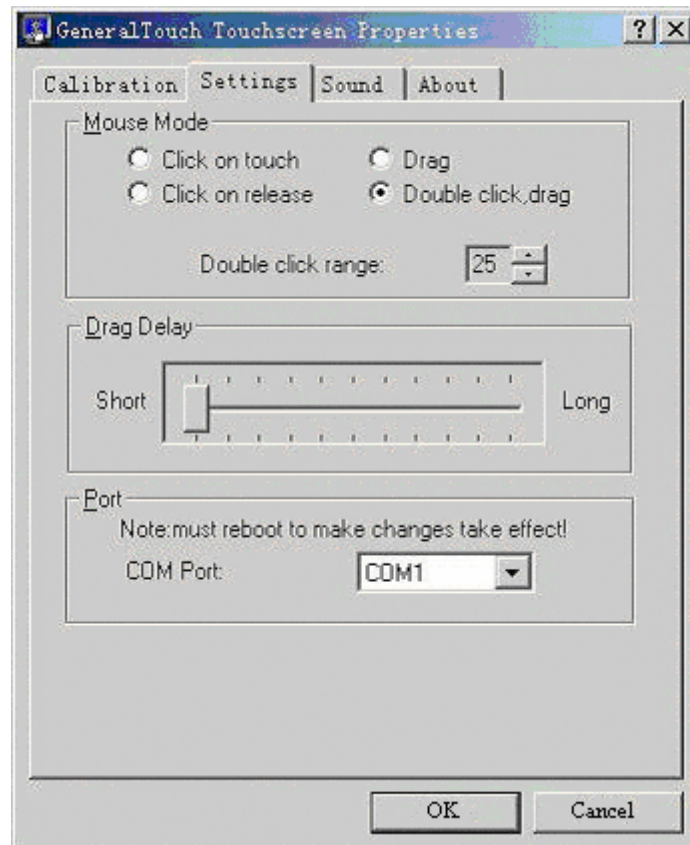
Remarks:

if there are any changes occurring as follows when in use, usually re-calibration is required.

1. Change the resolution of the display.
2. Replace the touchscreen or the controller.
3. Replace the computer or monitor.
4. After erasing dust

Setup the touchscreen parameters

In the "control panel", click "Touch screen", the following interface - **General** tag can be used to change the touch operating mode.



Operating mode (mouse emulation mode)

“Click on touch” means the response when the finger presses on the touchscreen ;

“Click on release” means the response when the finger leaves the touchscreen;

“Click, double click, drag” means to support click and drag at the same time.

“Double click range” is the double-clicking area , unit : Pixel.

“Drag delay”

It indicates the time delay for drag.

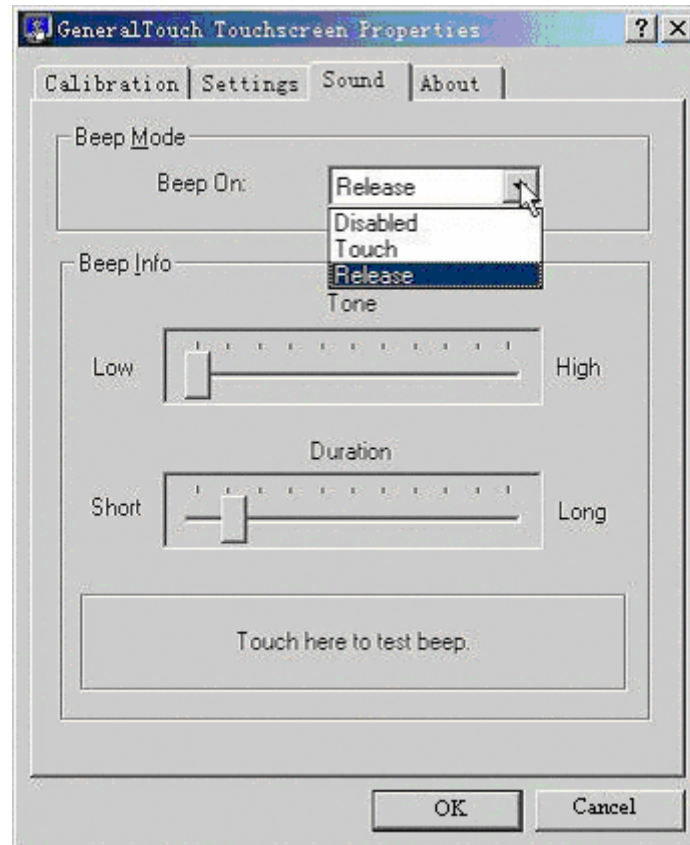
Selection of the serial ports (com port)

Here the serial port which connects the touchscreen to the computer can be changed.

After changing, the computer needs restarting.

Selection of touch beep (beep when touch release)

In the “control panel”, click “Touch screen”, the following interface-General tag can be used to change touch beep mode.



Beep mode

Select release means beep when touch release.

Select touch means beep when touch.

Select disabled means beep disabled

Sound mode

Tone can change sound frequency

Duration can change sound length

Remark : You can test the sound after setup

Uninstallation of the touch driver

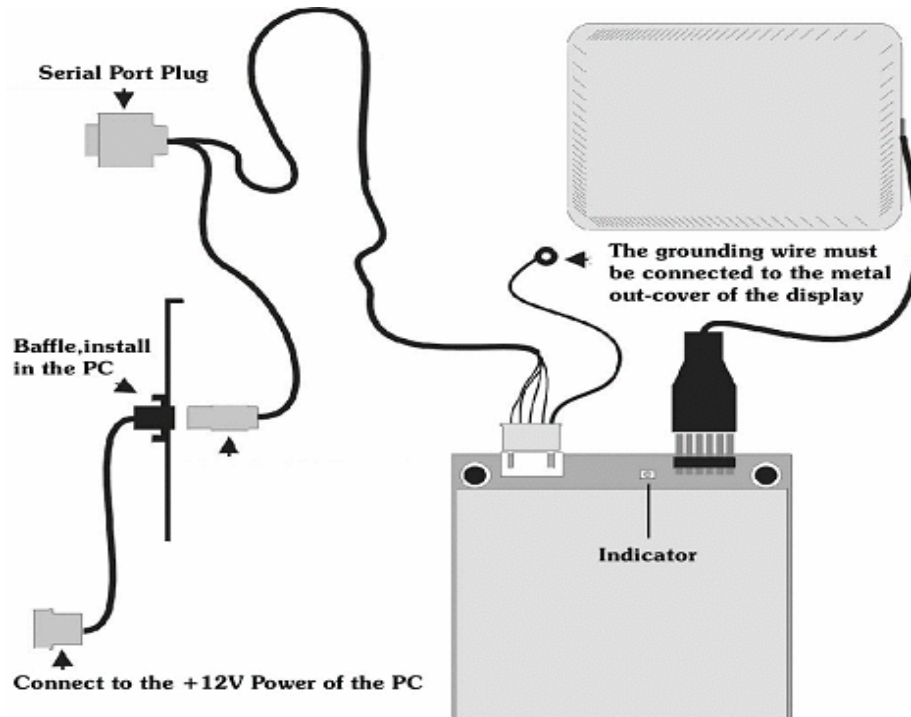
Warning : If reinstallation of the touch driver is required, the old version touch driver must be uninstalled first before reinstalling the touch driver.
Click "start"--"setup"-- "controller panel"-- "add/delete program"-- "install/uninstall".
Click " RS-232 , Acoustic Wave TouchScreen " in the selection box.

Click "add/delete".

According to the prompt, restart the computer to complete uninstallation of the touch driver.

The connection and operation of controller

Connection drawing below :



The controller indicator light working state :

1. After the computer is started, the indicator light is on for about one or two seconds, then goes off; when the finger touches the touchscreen, the indicator light is on and remain in this state until the finger leaves the touchscreen.
2. The indicator light keeps flickering;
3. The indicator light does not light on all along.

Analysis and Elimination of the common malfunction

Steps for Malfunction Analysis :

1. Check all the connection cables to make sure they are correctly connected and not loose , especially make sure that the controller plug and the grounding wire are connected well.
2. Check the state of the controller indicator (please refer to the notes of the connection and operation of the controller).

- When the indicator is in state 1, if there is no touch response, there is something wrong with the serial port or the serial port connection;
- When the indicator is in state 2, the touchscreen or controller may have been damaged, please contact us or our distributor;
- When the indicator is in state 3, something has gone wrong with the power supply input of the controller, please check the connection of power supply, especially the connection between the baffle and the plug of the power supply inside the computer, examine if there is something wrong with the power supply of the computer.

3. Is the driver installed properly?

4. Is the serial port selection right?

5. Is there any conflict between devices inside the computer and the serial port?

For example, some network cards, after installed, the default IRQ is 3, which is in conflict with the IRQ of COM2, here the IRQ of the network should be changed to the idle IRQ.

◆ Dust issue

Because the surface of the touchscreen is bestrewed with acoustic wave when the SAW touchscreen works, if the touchscreen has not been cleaned for a long time, thus resulting in so much dust that the reflection stripe will be obstructed, The touchscreen will lose touch efficacy partially or completely

Solution : For touch monitors, wipe away the dust on the reflection streaks gently with the clean namecard or papernote through the gap between the front cover of the monitor and the touchscreen, and then restart the computer.

◆ Grounding issue

If the grounding wire of the controller is not well connected, it will affect the function of the circuit inside the controller and may result in: the mouse cursor moves randomly or partial touch becomes invalid.

Be sure to well connect the grounding wire of the controller.

◆ Shut down the computer environmental protection / energy saving

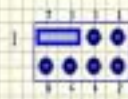
setup.

We suggest the screen saver be canceled when using touchcsreen and cancel energy saving setup of the monitor and close the power supply management setup of the mainboard.

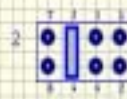
JMP1 usage

As shown below :

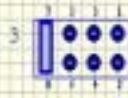
JMP1 SET



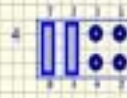
This jumper is only applicable for the touchscreen of less than 17"



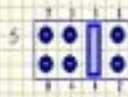
This jumper is only applicable for B type touchscreens and the test of A/D value and wave gain.



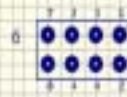
This jumper is only applicable for the touchscreen of over 17"



This jumper is only applicable for O type touchscreens and the test of A/D value and wave gain.



This jumper is reserved by GeneralTouch.



external connection of LED.

Notice: Installations for WinXP and WinNT, please refer to this manual.